

TURBINE NUMBER: 295264 / 295265 / 295266

MODEL LIST: 7L9A1PE16-1T3

REQUISITION NUMBER: LATER

TYPE: PG9151E

SPEED GT/LOAD: 3000/3000 RPM

SITE CONDITIONS: 122 DEG F 14.6 PSIA

NAMEPLATE RATING:

	GAS FUEL	LIQUID FUEL
BASE	84600 KW	83000 KW
PEAK	91080 KW	89320 KW

FUEL SYSTEM: NATURAL GAS AND DISTILLATE OIL

FUEL TRANSFER: AUTOMATIC

REFERENCE DOCUMENTS:


CONTROL SPEC SETTINGS: 324A5858
CONTROL SPEC ADJUSTMENTS: 324A5860
OPERATING INST. & SEQUENCES: 324A5859
DEVICE SUMMARY: 239B9860
TURBINE ELEMENTARY DIAGRAM: 237B6735


Table 3 Gas Turbine Units Installation Details


Unit Number	Capacity (MW)*	Installed Year	Operational Phase
1	81	1984	1
2	81	1984	1
3	81	1984	1
4	81	1987	2
5	81	1987	2
6	81	1987	2
7	93	1997	3
8	93	2000	4

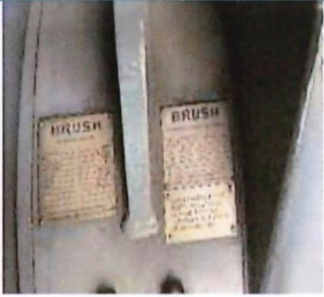
GT Operational Hours						
FR9	GT1	GT2	GT3	GT4	GT5	GT6
Gas Fired Hrs	189,554.93	170,312.20	202,697.10	171,323.96	166,897.87	163,005.73
Diesel Fire Hrs	47	53.8	69	20.11	21.47	5.2
Total Start	2736	3718	2886	3704	3575	3634
Last Main.	HGPI-Jan 19	HGPI-Mar 21	MI-Dec 18	MI-Nov 18	HGPI-Nov 17	HGPI-Nov 18

Table 4 List of Equipment/systems for Part A Sell Off

Item code	Equipment Name	Qty	Make/ Model	Specifications	Photo
Phase 1 (GT 1,2 &3)					
M1	Mechanical				
M101	Gas Turbine Package: i.GT and Compressor, rotors, ii.atomizing system, combustion system, IGV, Jacking oil system, Hydraulic oil system, Lube oil system, iii.CO2 system for fire protection, iv.startup motor & system, V.GT compartment heating and ventilation system, Vi.Acoustic enclosure	3	John Brown Engineering Gas Turbine Ltd./ GE/ MS9000E / PG9151E /1983	Rated Output: 82 MW Guaranteed Output: 81 MW ¹ demonstrated at DCC test in 2021. Approximate weight each: 350MT	

E1	Electrical				
E101	Generator package: consisting of Generator rotor, stator, Exciter	3	Brush / BDAX9.450 R	109.5 MW (23 deg C), 3000 rpm, water cooled Approx. Weight each: 210 MT	

Phase 2 (GT 4,5 & 6)					
M2	Mechanical				
M201	Gas Turbine Package: i. GT and Compressor, rotors, ii. atomizing system, combustion system, IGV, Jacking oil system, Hydraulic oil system, Lube oil system, iii. CO2 system for fire protection, iv. startup motor & system, v. GT compartment heating and ventilation system, vi. Acoustic enclosure	3	General Electric/ MS9001E/ PG9151E /295264 to 295264/1986	Rated Output: 84.6 MW Guaranteed Output: 81 MW ² demonstrated at DCC test in 2021. Approx. weight. each: 350 MT	

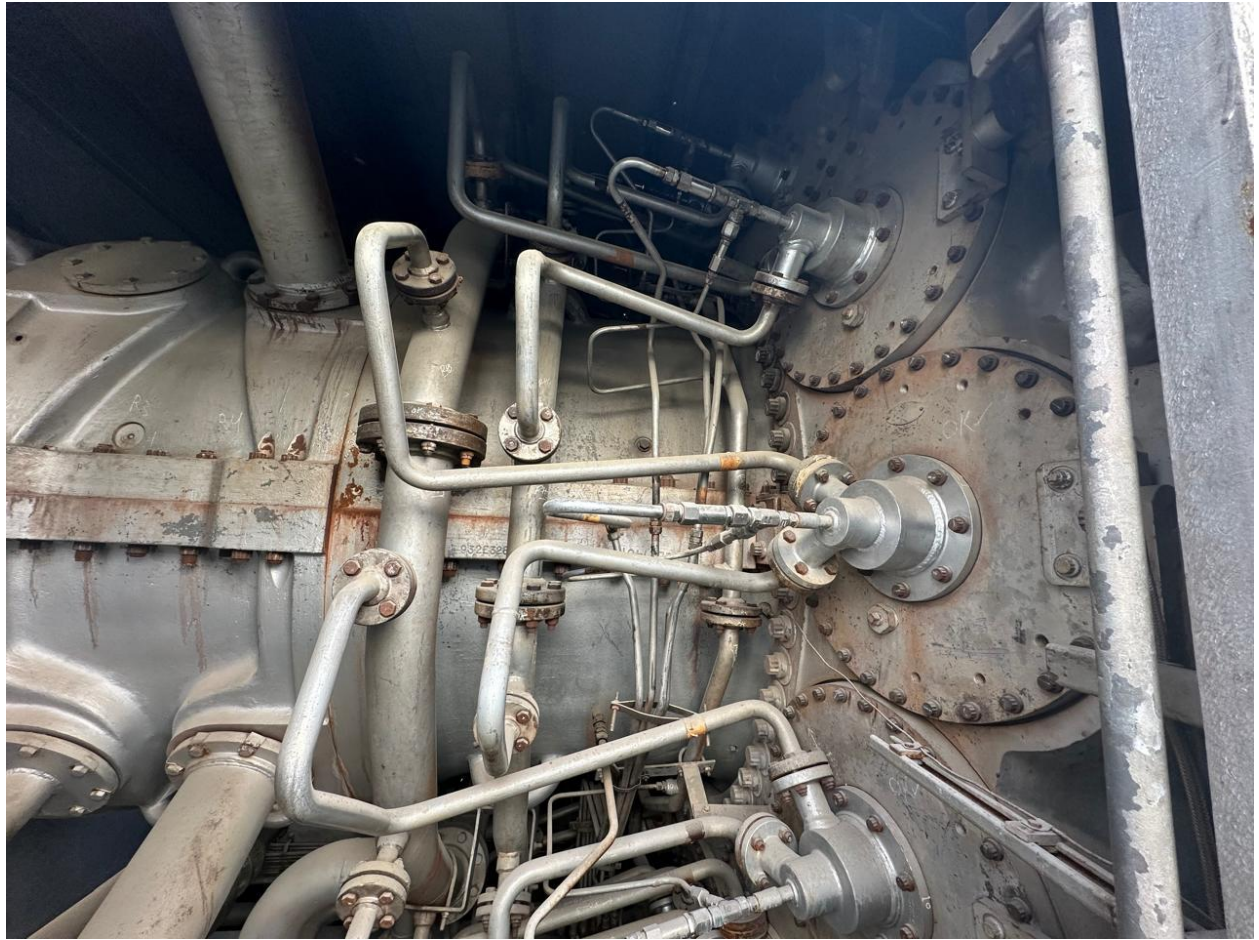
Item code	Equipment Name	Qty	Make/ Model	Specifications	Photo
E2	Electrical				
E201	Generator package: consisting of Generator rotor, stator, Exciter, AVR system	3	Brush/ BDAX 9-355PR / 1986	105.75 MVA, 11.5 KVA, 0.8 PF, 3000 rpm, Air cooled. Approx. Weight each: 210 MT	











BRUSH

A.C. GENERATOR

MANUFACTURED FOR GENERAL ELECTRIC COMPANY.
GAS TURBINE DIVISION.
SCHENECTADY, NEW YORK, U.S.A.

OUTPUT KVA.	105750	B DAX 9-355R	FRAME
R.P.M.	3000	60745A-IG	MACHINE N ^o
VOLTS	11500	CONTINUOUS	BASE RATING
AMPS.	5310	IEC 34.1	SPEC.
PHASES/HZ	3-50	50°C	AMB. TEMP.
PHASE CONN.	STAR	1000 M	ALTITUDE
EXC. VOLTS	129	F	ROTOR INSULn
EXC. AMPS.	1446	F	STATOR INSULn
DATE	1986	0.8	P.F.
COOLANT	AIR		

BRUSH ELECTRICAL MACHINES LIMITED
TOUGHBOROUGH ENGLAND
A HAWKER SIDDELEY COMPANY

PHASE SEQUENCE.
U.V.W. ROTATION CLOCKWISE
LOOKING ON EXCITER END
IN ACCORDANCE WITH IEC 34-8
(rotation not standard)

BRUSH
BRUSHLESS EXCITER

RECT. DC. KW.	300	FRAME	40-25
R.P.M.	3000	MACHINE No	60745A-1
RECT. D.C. VOLTS.	45	RATING	CONTINUOUS
RECT. D.C. AMPS	30	SPEC	EC 34-10
EXC. VOLTS	40	AMB. TEMP	50°C
EXC. AMPS	5	ALTITUDE	1000 ft
PHASES	3	ARM INSUL.	F
DATE	1986	FIELD INSUL.	F

BRUSH ELECTRICAL MACHINES LIMITED
LOUGHBOROUGH ENGLAND A HAWKER SIDDELEY COMPANY

BRUSH
PERMANENT MAGNET GENERATOR

TYPE	PMX 34-10	MARK II
MACHINE No	60745A-1	
R.P.M.	3000	3600
HZ	400	480
VOLTS	190	230
AMPS	15	15

BRUSH ELECTRICAL MACHINES LIMITED
LOUGHBOROUGH ENGLAND A HAWKER SIDDELEY COMPANY

BEFORE MAGNETISING PILOT
EXCITER VISUALLY INSPECT
TO ENSURE ROTOR POLE
IS POSITIONED ON CENTRE OF
STATOR WINDING GROUP.