

Two Solar Turbine T130 Introducing

1-Parameter Datas

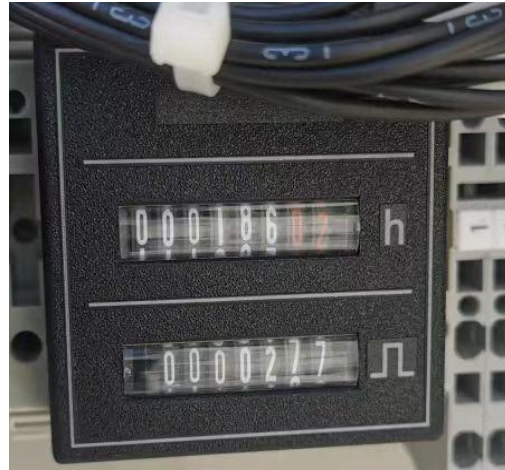
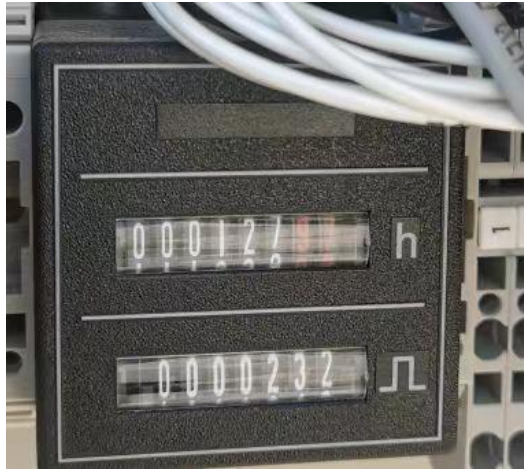
Manufacturer:SOLAR TURBINE
Output of one T130:15000KW
Voltage:10.5KV

Model:TITAN130
Speed:11197/1500RPM
Frequency:50HZ

2-Status

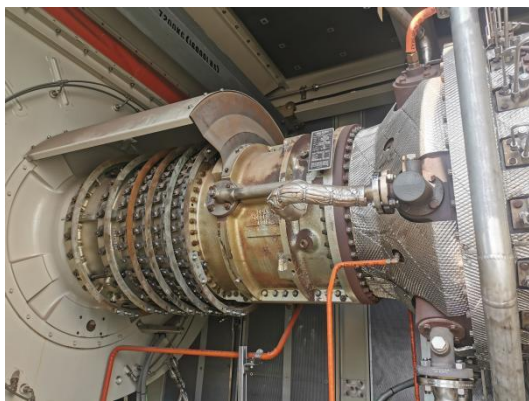
Two 130 units were manufactured in 2008, installed in 2009, and commissioned and put into operation in 2010. After being put into operation, the units were basically in standby state. The last startup date of one unit was November 19, 2021, with a total operating hours of 127 hours and 232 startup times. The last startup date of the other machine was December 10, 2021, with a total operating hours of 186 hours and 277 starts.

A-Hours&Start times



A-Appearance Photos





C-Endoscopic Photos



