



16/07/2025

2x Caterpillar G3520H Engine Condition Report

The engine order was cancelled due to improper covering during the original transport. Some water may have got into the cooling circuit. Our inspection shows that the main components of the engine: in the bottom end, in the cylinders and the turbo condition is as new.

Make & Model: Caterpillar G3520H

Capacity: 2,500 kW

Fuel: Natural gas

Year: 2024

Hours: 0

Voltage: 11,000 V

Frequency: 50 Hz

ENGINE 1

Turbo: Both air side and exhaust side inspected and photographed, found to be in as new condition. No ingress of foreign matters.

Cylinders: Removed rocker covers, coils/HT leads and spark plugs. Inspected cylinders with borescope, found to be in as new condition. No ingress of foreign matter.

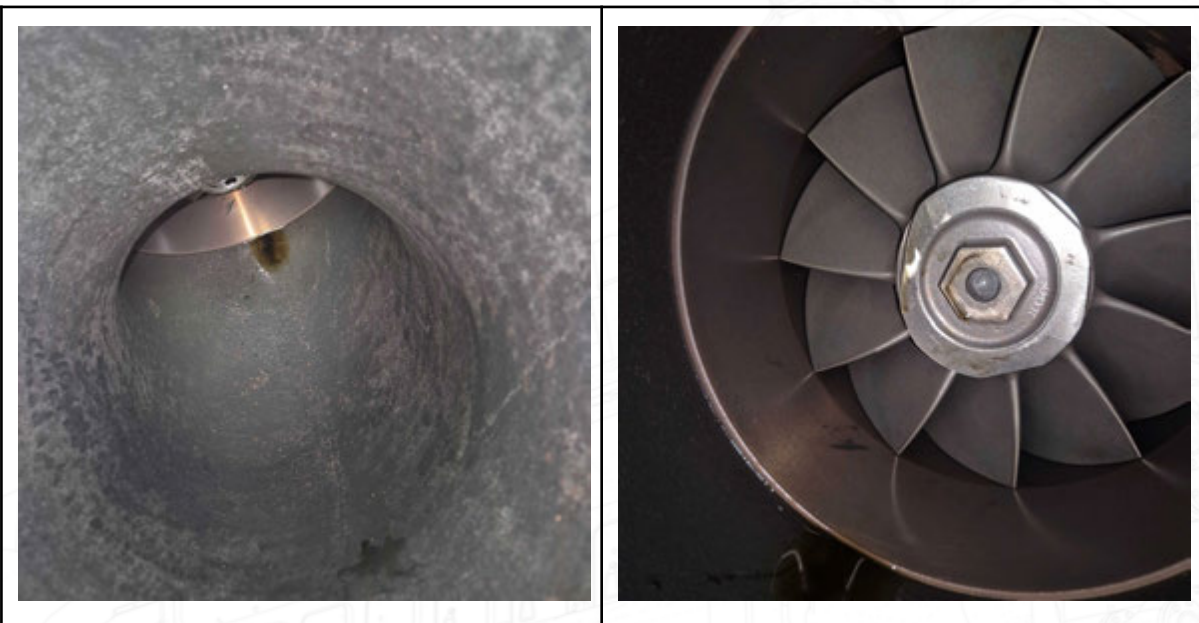
Some parts have been removed from the engine before the inspection was carried out.

Cylinders 2 & 11 had no coil fitted, cylinder 9 had neither coil or spark plug fitted.

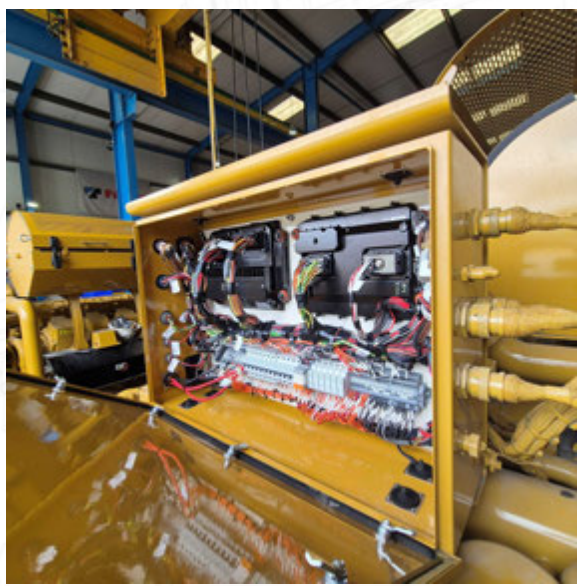
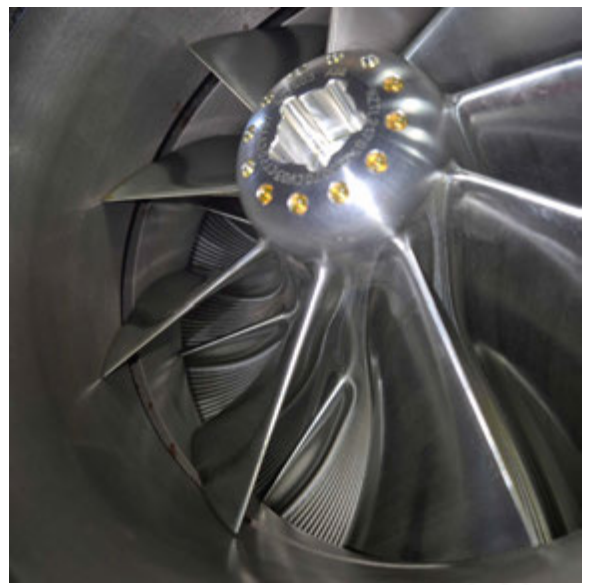
Crankcase doors removed to inspect crank and connecting rods, all found to be in as new condition. No ingress of foreign matter.

The air filter was not fitted but the air inlet chamber was sealed to the elements as was the turbo exhaust.

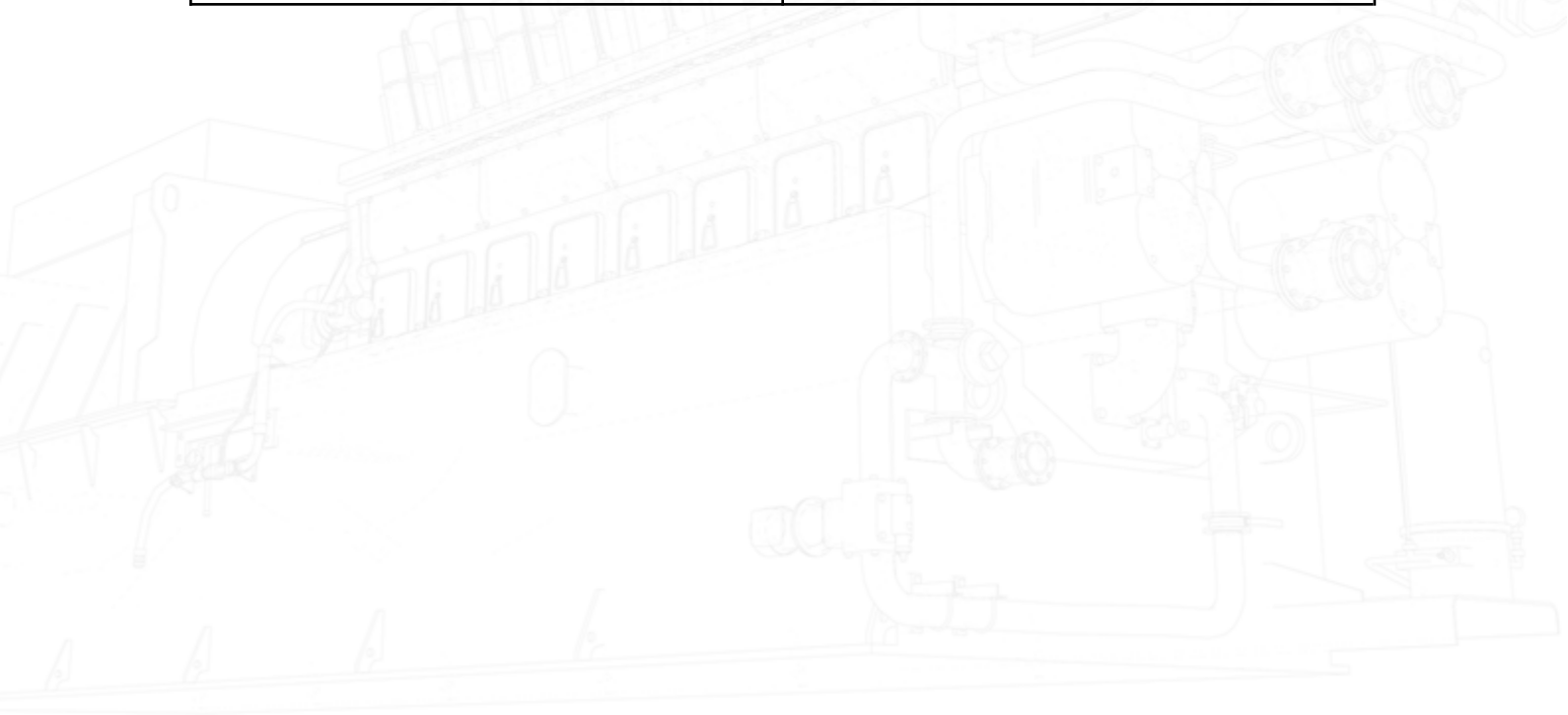
Photos of inspection and borescope photos are attached.







ENGINE 1 BOROSCOPE PHOTOS



ENGINE 2

Turbo: Both air side and exhaust side inspected and photographed, found to be in as new condition. No ingress of foreign matters.

Cylinders: Removed rocker covers, coils/HT leads and spark plugs. Inspected cylinders with borescope, found to be in as new condition. No ingress of foreign matter.

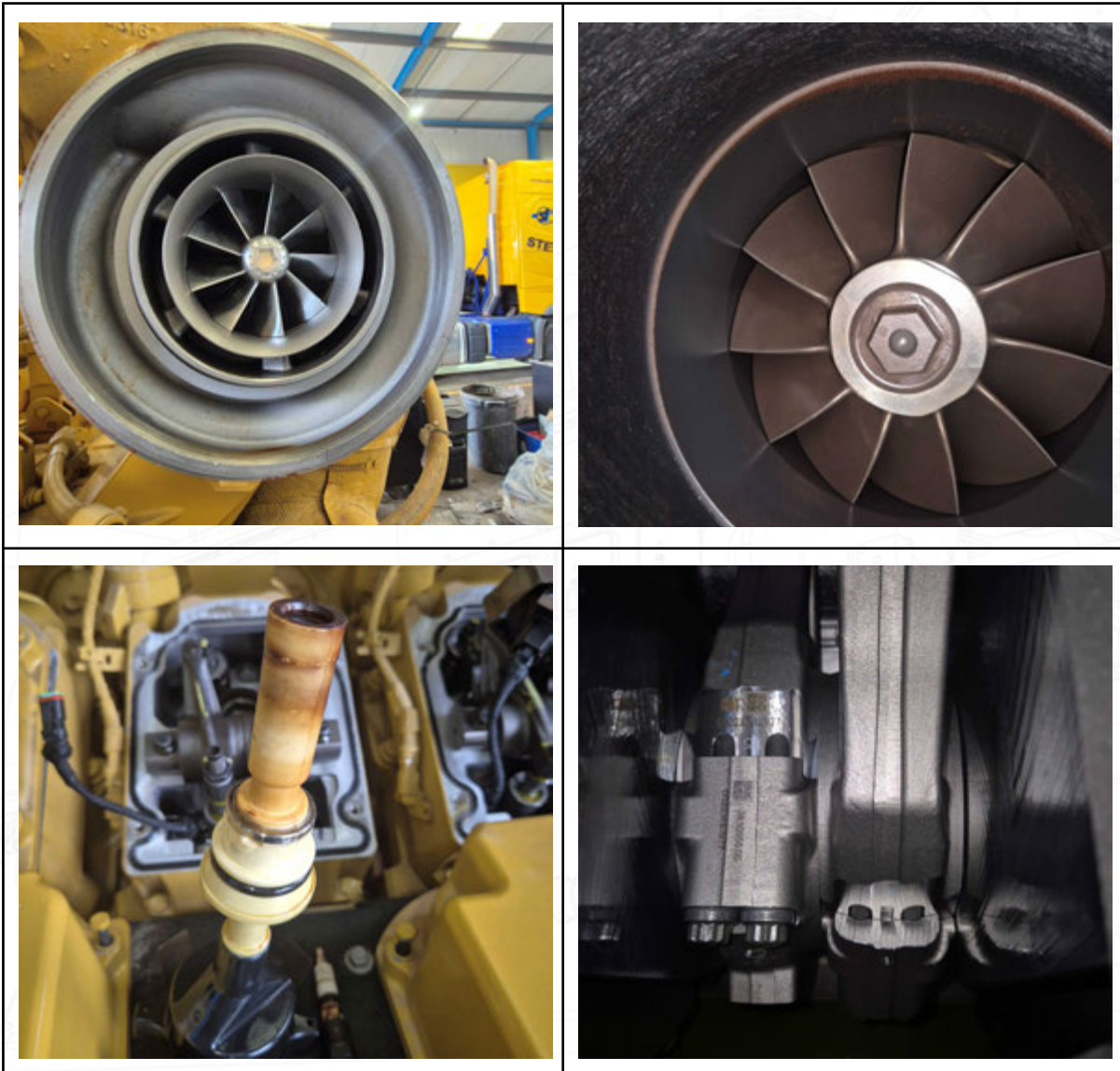
Some parts have been removed from the engine before the inspection was carried out.

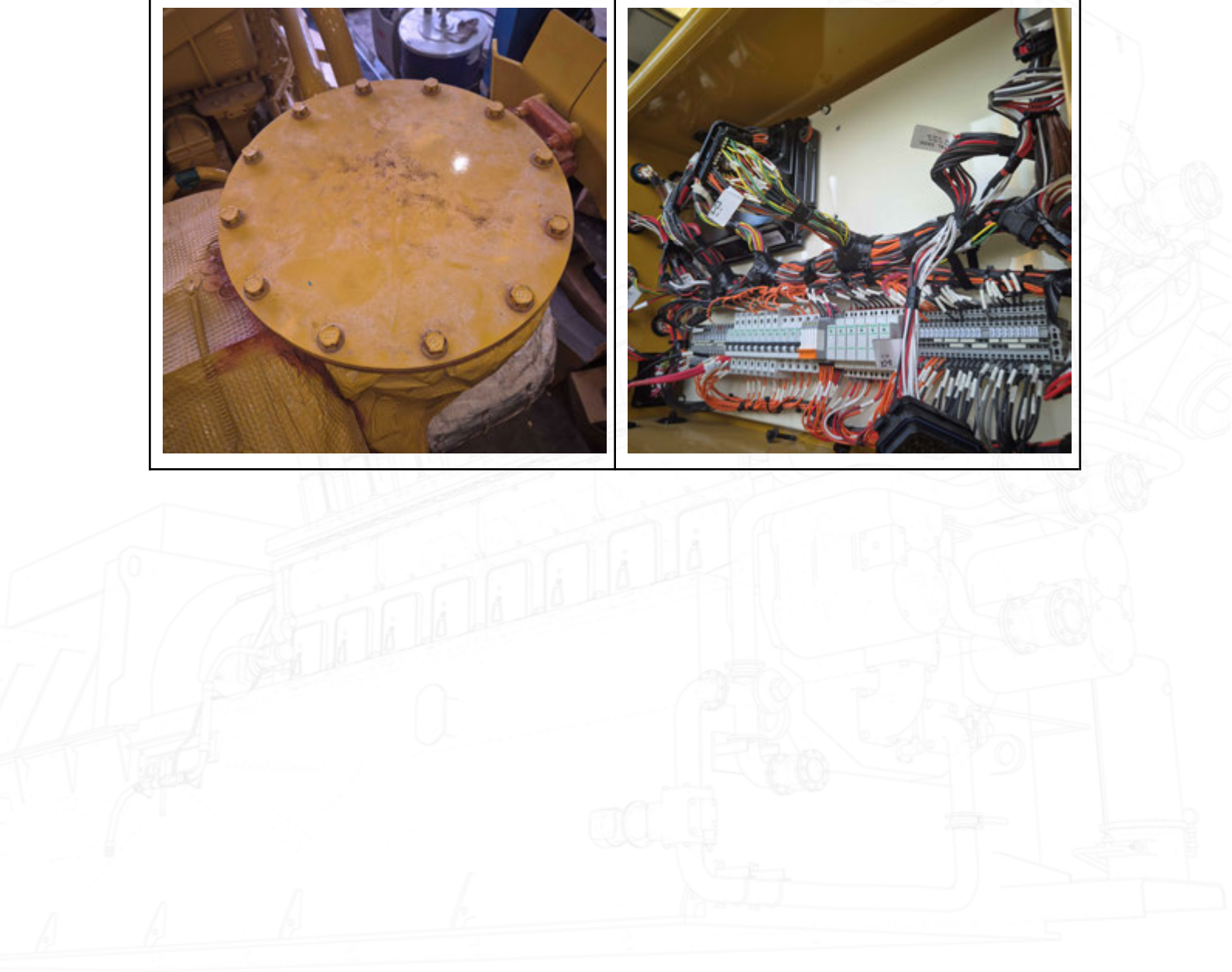
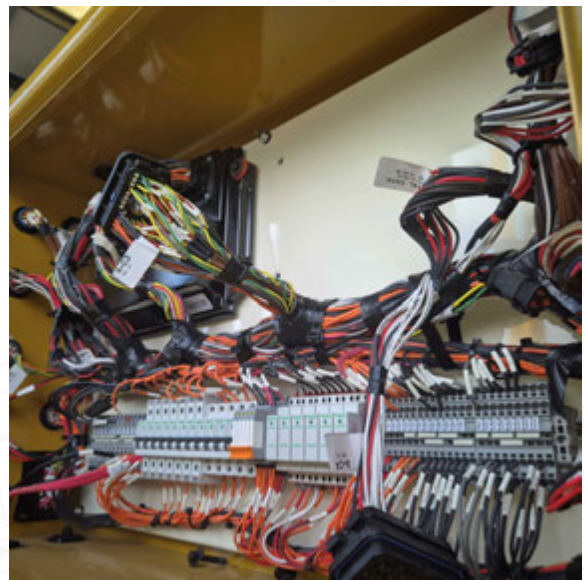
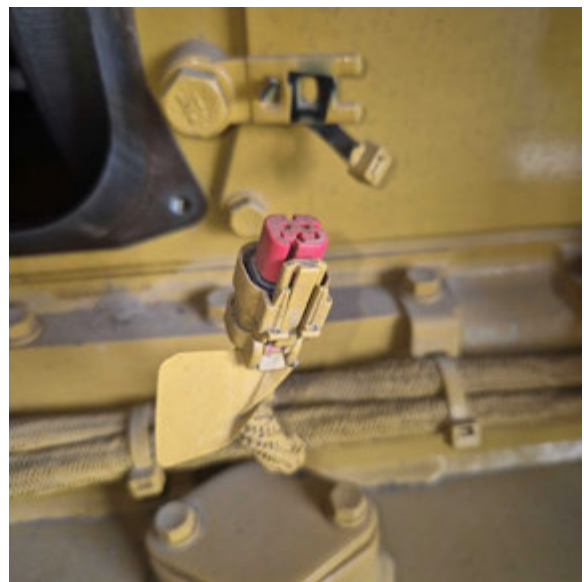
Cylinders 2, 6 & 13 had new coils but used spark plugs. All remaining cylinders had used coils and used spark plugs.

Crankcase door removed to inspect crank and connecting rods, all found to be in as new condition. No ingress of foreign matter. The air filter was not fitted but the air inlet chamber was sealed to the elements as was the turbo exhaust.

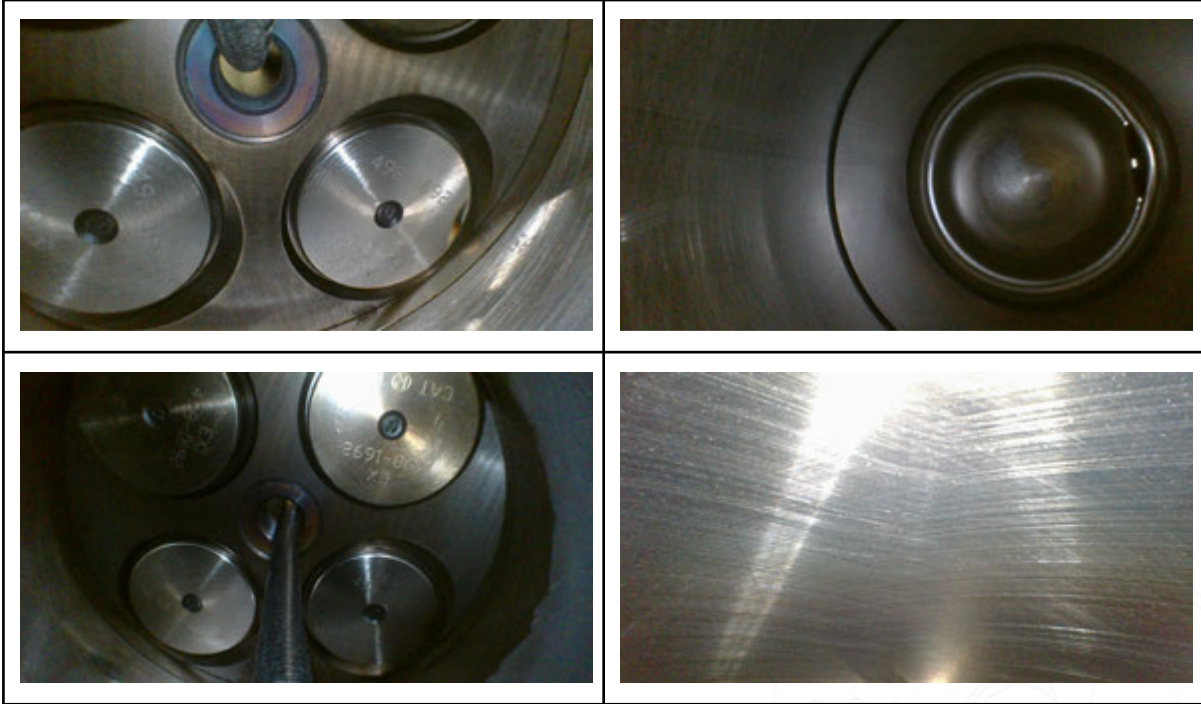
Cylinder 16, T/C missing.

Photos of inspection are attached.





ENGINE 2 BORESCOPE PHOTOS



OTHER ANCILLARIES



