

# Budgetary Offer

Project name  
**Quick Power**

This scope of supply is valid for one item of Siemens Industrial Turbomachinery AB's model SGT-600 gas turbine for power generation, designed for continuous base load operating mode.

Turbine type  
SGT-600  
**Power Generation**

The SGT-600 is a high-performance industrial gas turbine suitable for a variety of applications including simple cycle, combined heat and power and combined cycle power plant. To ensure reliability in the SGT-600, its design philosophy has been based upon simplicity, robustness, and the use of proven technology. Modularization, few parts, long component life and easy inspection ensure high availability and low maintenance costs.

Delivery package  
**6 units of SGT-600**  
NEW  
**Complete ready for immediate use**

Both units are built in 2022 by SIEMENS Energy Germany under originally conditions and equipped with all ISO standard certifications. Restricted we reserve all rights in this document and in the information contained therein. Reproduction, use or disclosure to third parties without expressed authority is strictly forbidden. Siemens Energy ©.

Siemens Energy is a registered trademark licensed by Siemens AG. Siemens Industrial Turbomachinery AB will change its legal entity name during April, 2020 to Siemens Energy. The change of our company name is a gradual process that includes several steps resulting in gradual updates of documents, applications etc. Therefore, all document included in this tender issued under the name Siemens Industrial Turbomachinery AB are equally valid for Siemens Energy AB.



## **Compliance Culture with Customers and Partners**

Siemens is committed to being one of the world's best companies in terms of transparency and compliance. We are driving this through both our leadership culture and the application of clear Business conduct guidelines.

Our Business Conduct guidelines are applicable to all Siemens employees and as such every employee makes a personal contribution through their observance and adherence. Accordingly, we have a zero-tolerance policy for any illegal or unethical behaviour.

Acting with responsibility and integrity is decisive for building and sustaining the highest relationships with our customers and business partners based on trust. If you detect any misconduct on the part of our employees, please inform us to this effect immediately. Simply contact our Internet helpdesk "Tell us, or access the Internet Website [www.siemens.com/tell-us](http://www.siemens.com/tell-us) at any time around the clock.

## **Proprietary Information**

All intellectual property rights in this proposal and in the goods and services offered therein belong to us or to third parties. The information contained in the proposal or provided by us in support of the proposal is to be used only for the purpose of assessing our proposal and is to be kept confidential.

Such information and any copies made are to be returned or destroyed if our proposal is not accepted.

© Copyright Siemens Energy, Power Generation Division

## **Table of contents**

|  |            |
|--|------------|
| <b>1. Scope of Supply.....</b>                         | <b>3</b>   |
| <b>2. Exclusions.....</b>                              | <b>7</b>   |
| <b>3. Design Requirements .....</b>                    | <b>8</b>   |
| <b>4. Performance.....</b>                             | <b>10</b>  |
| <b>5. Drawings.....</b>                                | <b>13</b>  |
| <b>6. Shipping Specification .....</b>                 | <b>13</b>  |
| <b>7. Installation and Commissioning Schedule.....</b> | <b>15</b>  |
| <b>8. Maintenance General Information .....</b>        | <b>16</b>  |
| <b>8.1 Service agreement .....</b>                     | <b>16</b>  |
| <b>9. Quotation .....</b>                              | <b>16-</b> |

## **1. Scope of Supply**

This scope of supply forms a separate unit within the terminal points (utilities/consumables such as auxiliary power, fuel, water, washing detergent, instrument air, lubricating oil and grease are excluded). Alternative configurations are available.

Siemens' model SGT-800 gas turbine Power Generation for Onshore applications comprises:

### **Gas turbine equipment**

#### **Gas turbine engine**

Single shaft designed core engine with a nominal rating of 24,5 MW. The engine is arranged for cold end drive and meets electrical ISO conditions.

- Compressor inlet casing and inlet bell mouth casing.
- Two bleed valves for air bleeding during start up and shutdown.
- One annular third generation dry low emission combustion chamber including 30 low emission burners.
- Vibration probes of accelerometer type.

#### **Combustion air inlet system**

- Filter house with service platform and ladder.
- Two-sided pulse clean filter system with two filter stages, class F7 pulse filters as first stage and static class E10 disposable high efficiency filters as second stage.
- Support structure for filter house.
- Silencer.

#### **Exhaust gas system**

- Insulated axial exhaust diffuser with support.
- Stack height: 18 m above ground.
- Prepared for installation of diverter valve (diverter valve not included).
- Exhaust stack including bellows, transition piece and silencer with internal insulation.

#### **Base frame for gas turbine Gas turbine enclosure**

Enclosure for weather and noise protection equipped with ventilation, main and emergency lighting and external stairs & walkways.

- Left side maintenance opening, looking from exhaust towards inlet. Internal walkways.

#### **Ventilation for gas turbine enclosure**

- 2 x 100% AC driven fans creating atmospheric under pressure in gas turbine enclosure. The fan unit is placed outside the enclosure.
- One-stage disposable barrier type air filter, class G4.
- Ducts in carbon steel.
- Inlet and outlet are equipped with:
  - Silencers
  - Weather louvers
  - Shut off dampers

#### **Gas fuel system**

- Internal gas fuel unit.
- Manual shut-off valve and pneumatically operated spring closing gas isolation valve.
- Y-type strainer with differential pressure measurement.

- Stainless steel piping downstream strainer.
- Ventilation valve to atmosphere.
- Leakage test of the ventilation & shut-off valves with pressure transmitter at start-up.
- Two spring closing, pneumatically operated quick shut-off valves with ventilation valve in between.
- AC servo motor operated primary gas control valve to the two primary gas manifolds.

### **Ignition system**

- Main gas fuel used as ignition gas.
- Pressure regulator, shut-off and vent valves (solenoid operated).
- High energy spark plugs for cross-ignition.

### **Starting system**

Static frequency converter-controlled AC electric start and barring motor with gearbox.

- Driver shaft with bearings and free wheel of SSS-type clutch.

### **Lubricating oil system**

System common for driver and driven equipment.

- Carbon steel tank with sub-merged oil heating.
- Three AC driven main pumps of centrifugal type, two in operation and one in standby mode. Fully automatic and pumpless switch over to standby pump. Coast down can be made safely with a single pump in operation.
- Electrical motors, fed via frequency converters. DC backup provided on all pumps by a 440V battery to the frequency converters. In case of failure in AC distribution, switch over to DC feeding is made automatically and without interruption.
- 2 x 100% oil filter with possibility to switch filter during operation.
- Oil mist filter with stainless steel casing.
- Piping downstream filter in stainless steel.
- 2 x 100% AC motor driven oil system ventilation fan.
- Air cooled lubricating oil coolers of tube type.

### **Cooling and sealing air system**

- Instruments and components for standard cooling and sealing air system.

### **Washing and cleaning system**

- Turbine compressor washing system. •

Water wash trolley.

## **Electric generator equipment**

### **Electric generator**

Four-pole synchronous AC generator of salient pole rotor type. Brushless excitation system with rotating rectifier and PMG for excitation power supply. Lubrication oil is supplied by the gas turbine package common system.

- 11 kV, 50 Hz and 7,700 RPM.
- Power factor 0.8.
- Generator cooling IC6 A1 A6, TEAAC.

### **Line and neutral cubicle**

Neutral earthing resistor.

### **Synchronizing equipment**

- Automatic and manual (semiautomatic) synchronizing system for two circuit breakers: the generator circuit breaker and one additional breaker. The system is provided with a "synchronizing by-pass" switch for breaker closing against a "dead bus".
- Frequency/load control.

### **Main gear and couplings**

- 6600/1800 rpm speed reduction gear of double helical design. High speed quill shaft between gas turbine and speed reduction gear. Low speed quill shaft between speed reduction gear and electric generator.

### **Weather protection for electric generator**

- Weather roof over the electric generator. Material in carbon steel.

## **Auxiliaries**

### **Foundation**

Anchor bolts for auxiliaries, such as stairs, platforms, coolers, fuel systems etc.

### **Gas detection system**

Enclosure provided with gas detection system to detect gas fuel leakages.

### **Fire detection and extinguishing system**

Fire detection & extinguishing system for the gas turbine room.

- 1 x 100% CO2 discharge for fire protection.
- Central fire suppression unit for alarm and automatic extinguishing.
- Manual release buttons located outside each door of the gas turbine room.
- Extinguishant release audible and visible alarms.
- Extinguishant system distribution pipework, valves and nozzles.

## **Electrical and control equipment**

- Freestanding LER including indoor lighting, HVAC and external stairs and platforms. Separate UPS battery module.

### **Motor control centre**

Motor Control Centre (MCC) including

low voltage distribution of IEC 61439 form 4b and withdrawable unit design supplying all consumers, except starting system.

### **Control system**

- Micro-processor-based control, supervision, and protection system with PC based operator's station. Application software in controllers is battery backed-up for two months. License for control system programming included in operator station.
- Package protection system is built around a fail-safe EC 61508 SIL proven safety controller.
- The critical signals work according to the principle of 1oo2.
- Main control and monitoring of the gas turbine contains systems and programs to perform both open and closed loop control. Main tasks are analogue and binary handling, sequencer for start & stop and gas turbine set supervision and monitoring.
- Gas generator speed and temperature control.
- PC and Windows 10 based operators' interface with necessary software to operate the package in all operation modes. Rack type computer with redundant hot-swap, RAID controllers.
- Communication, hardwired interface and Modbus serial link and modem with standard scope of signals for communication with external computer system.

## **UPS and motor drives**

UPS with MCB distribution board supplying uninterrupted power to instrument and control system. Automatic and pumpless switch over between mains and back-up battery by static frequency converter.

- Common battery supply DC power to the UPS and UMD systems. Valve regulated lead acid 440 V DC battery including charger with temperature compensated charging voltage. Capacity for complete ten hours emergency cool down cycle and one hour autonomy time for the UPS system.
- Lubricating oil emergency PLC used for pump control during UPS powered cool down.

## **Electrical installation**

## **Factory services**

### **Packing and delivery**

- FAS Norrköping, Sweden delivery as defined in Incoterms 2010.
- Packaging for sea transport.

### **Factory assembly**

Mechanical, electrical assembly and control system installation in workshop including tests.

### **Factory tests**

- Balancing and over-speed testing of the gas turbine rotor.
- Electric generator routine test at subcontractor's workshop.
- Unit workshop stationary test with contract auxiliaries and UCP. During the stationary test settings and adjustments are verified and flushing of systems carried out. Test includes function test of lubrication oil system.

## **Installation and commissioning services**

Installation and commissioning is offered on a daily rate basis.

## **Operation and maintenance**

### **Customer documentation**

Standard operation and maintenance documentation compiled in the As Designed and As Built delivery. Three electronic copies, except one copy of Manufacturing record book. The electronic version is supplied on DVD.

- Design phase documentation delivered during the project engineering phase.

Commissioning spare parts for core and start-up (electrical and mechanical).

## **2. Exclusions**

Siemens does not accept any responsibility for items which are outside its scope of supply. Where design of the installation is to be provided by the purchaser, Siemens requests the opportunity to review and comment against the general arrangement. It is particularly important for safe and proper operation to ensure that the ductwork systems are compatible with the gas turbine.

The following items are specifically excluded from this budget offer:

- All civil works including foundations.
- Counter flanges, gaskets, bolts at terminal points.
- Embedded steel plates.
- Interconnecting piping and cables between skid and electrical cubicles.
- Back-up Spare parts and operation consumables.
- Supervision of installation commissioning.
- Training.
- Trial run.
- Generator Circuit breaker
- Start motor transformer
- Liquid fuel system
- Gas turbine inlet cooling



### 3. Design Requirements

The equipment listed within the scope of supply is designed according to the following requirements:

#### Codes and standards

| Equipment                            | Code or standard   |
|--------------------------------------|--|
| Base frames                          | EN 1993 Eurocode   |
| Air intake filter                    | First stage filters: EN 779:2012. Second stage filter: EN 1822:2009.   |
| Gas fuel system                      | ISO 21789  |
| Lube Oil Unit                        | EN 60034 (corresponding to IEC 60034) and API 614, with exceptions and clarifications.   |
| Electric generator                   | IEC 60034-1  |
| Electric generator surface treatment | ISO 12944-2:1998 "Paints and varnishes. Corrosion protection of steel structures by protective paint systems."   |
| Main gear and couplings              | AGMA 6011-I03  |
| Speed reduction gear                 | Design according to AGMA 421   |
| Gas detection system                 | IEC/EN 60079-1:2004 Explosion group IIC (zone 1)   |
| Fire extinguishing                   | NFPA 12 with exceptions and clarifications. CO2 bottles if applicable: European Directive 1999/36/EC   |
| Motor control centre                 | EN IEC 61439   |
| Control system                       | EN IEC 61439   |
| Frequency converters                 | EN IEC 60204   |
| Electrical installation              | EN IEC 60204   |
| Control cables                       | EN IEC 60204   |
| SIL                                  | IEC61508/IEC61511  |
| Factory tests                        | ISO 3977-8   |
| Customer documentation               | ISO5457-1999 with designation system: KKS.<br>Documents' structuring principles based on IEC 81346: "Classification and designation of documents for plants, systems and equipment". |



## Life cycle assessment

A life cycle assessment study according to ISO 14040-43 is available. It contains quantifications of the resource depletion, generation of waste and emissions to the environment caused by the manufacturing, use and disposal of the product.

## Design basis

- Minimum outdoor temperature: -5 °C.
- Maximum outdoor temperature: 55 °C.
- The altitude of the installation is below 1000 meters.
- Package location: Outdoor.
- Onshore installation.
- Seismic loads according to IBC.  
Acceleration short period,  $S_s$ , up to and including 0.5g.  
Acceleration long period,  $S_1$ , up to and including 0.2g.
- Wind speed: 45 m/s according to IBC.
- Non-hazardous area.
- Far field, 100 m, sound pressure level: 65 dB(A).
- Design for sound pressure level 85 dB(A) surface sound pressure, near field.
- Auxiliary voltage: 400 VAC
- Air cooled coolers for all equipment.

## 4. Performance

|                      |   |
|----------------------|---|
| Altitude             | 100m above sea level                    |
| Barometric pressure  | : 01325 bar                             |
| Inlet pressure loss  | : 9.00 mbar (at ISO & Base Load, total) |
| Outlet pressure loss | : 5.00 mbar (at ISO & Base Load, total) |



### Power generation package

The SGT-600's ability to handle sudden load changes and its high exhaust temperature make it ideal for simple cycle, combined cycle, cogeneration, and other heating applications.

- Small footprint for easy fitting
- Modular and flexible package design
- Single-lift capability



## Mechanical drive package

The SGT-600 mechanical drive packages offer long lifecycles and can withstand extreme climates ranging from desert heat to arctic cold, oil platforms, and harsh industrial environments.

- Variable power turbine speed: 50 to 105%
- High load on low-power turbine speed
- Maintains efficiency at part load
- Low emissions at part load





## SGT-600

### Industrial gas turbine

#### Power generation

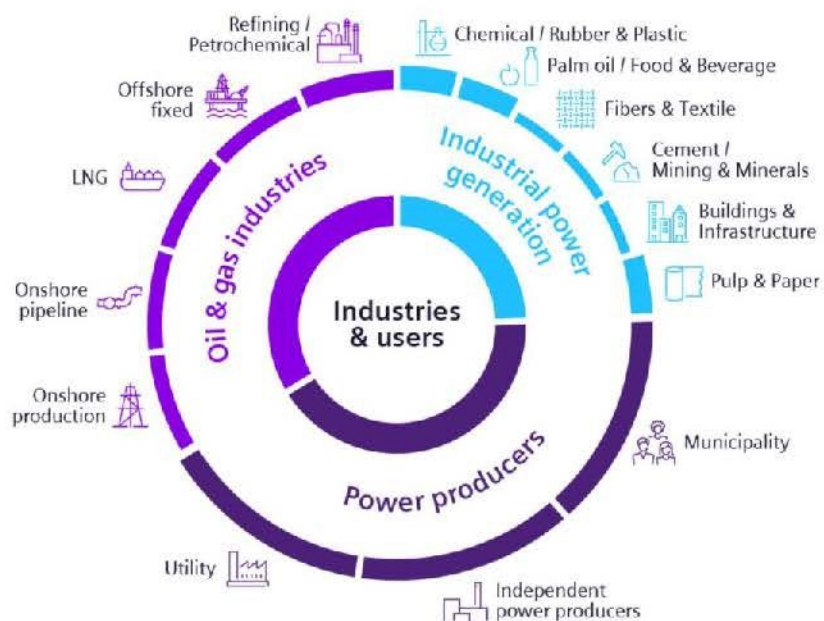
|                     |                   |
|---------------------|-------------------|
| Frequency           | 50/60 Hz          |
| Gross efficiency    | 33.6%             |
| Exhaust temperature | 543 °C (1,009 °F) |
| Exhaust mass flow   | 81.3 kg/s         |

**Power generation: 24.5 MW(e)**

**Mechanical drive: 25.2 MW**

#### Mechanical drive applications

|                     |                   |
|---------------------|-------------------|
| Efficiency          | 34.6%             |
| Exhaust temperature | 543 °C (1,009 °F) |
| Exhaust mass flow   | 81.3 kg/s         |



[illegible]

|                    |                                |
|--------------------|--------------------------------|
| Gross power output | 24.5 MW(e)                     |
| Fuel <sup>1</sup>  | Natural gas, dual fuel         |
| Frequency          | 50/60 Hz                       |
| Gross efficiency   | 33.6%                          |
| Gross heat rate    | 10,720 kJ/kWh (10,161 Btu/kWh) |
| Turbine speed      | 7,700 rpm                      |
| Pressure ratio     | 14:1                           |
| Exhaust mass flow  | 81.3 kg/s (179.2 lb/s)         |

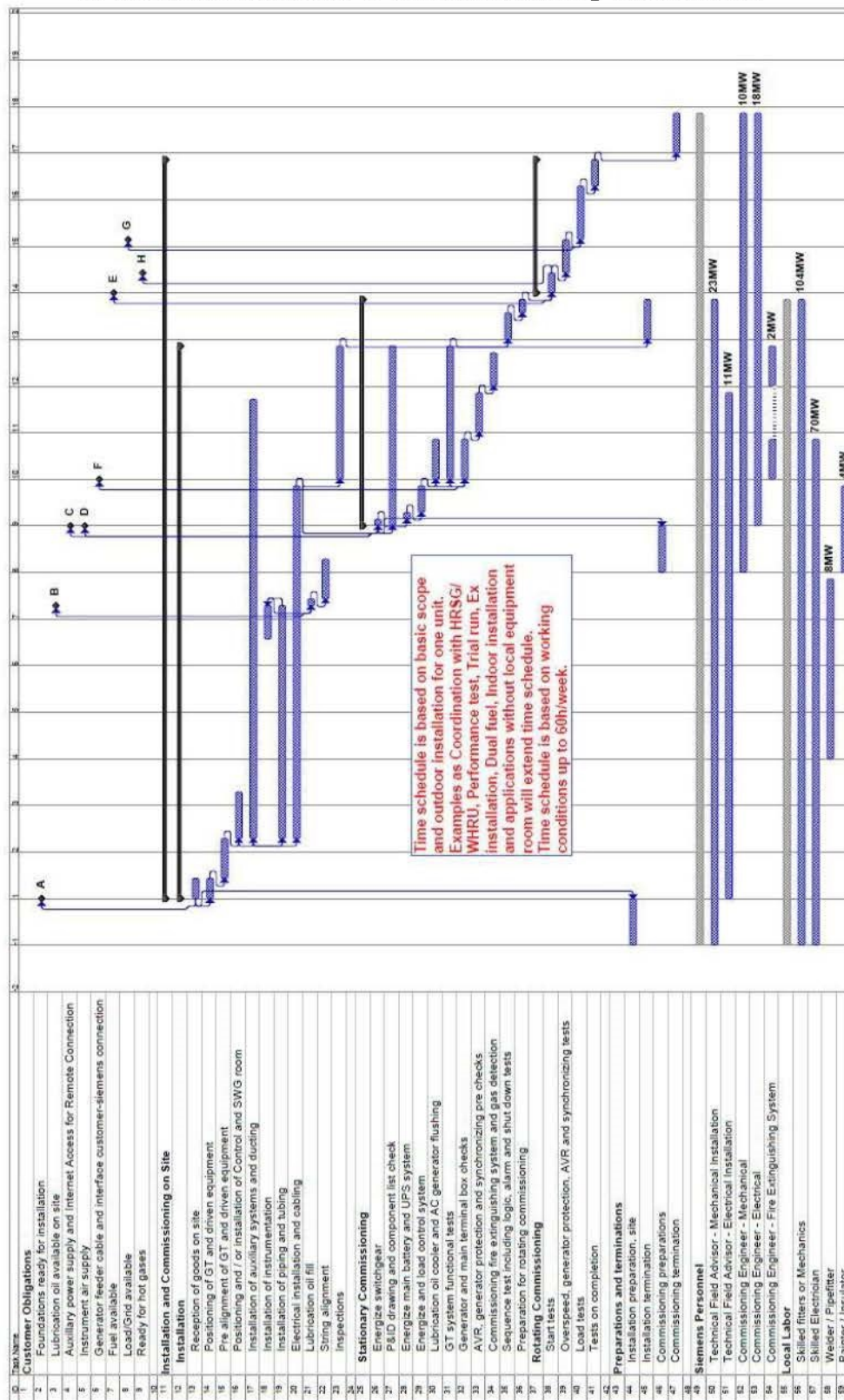
## 6. Shipping Specification

| Item | Name  | Gross weight (tonnes) | Packages dimensions (l x w x h meters / feet) | Volume (cu meters / cu feet) |
|------|---|-----------------------|---|------------------------------|
| 1    | Gas turbine block                             | 93.5                  | 10.4 x 4.45 x 4.0 / 34.2 x 14.6 x 13.1        | □195 / 6886                  |
| 2a   | Generator                                     | 78.5                  | 6.2 x 3.8 x 3.5 / 20.3 x 12.5 x 11.5          | □82 / 2895                   |
| 2b   | Main terminal box                             | 3                     | 3.75 x 1.85 x 3.0 / 12.3 x 6.1 x 9.8          | □21 / 742                    |
| 3    | Auxiliary skid                                | 20                    | 9.9 x 2.2 x 3.7 / 32.5 x 7.3 x 12.2           | □150 / 5297                  |
| 4    | Gas turbine enclosure                         | 40                    |   | □350 / 12360                 |
| 5a   | Filter housing                                | 12                    | 5.3 x 4.2 x 3.65 / 17.4 x 13.8 x 12.1         | □162 / 5721                  |
| 5b   | Filter inserts                                | 0.3                   | 1.2 x 2.2 x 0.8 / 3.9 x 7.2 x 2.6             | □4 / 141                     |
| 5c   | Inlet silencer                                | 7.5                   | 4.3 x 2.3 x 3.7 / 14.1 x 7.5 x 10.5           | □32 / 1130                   |
| 5d   | Inlet air ducting                             | 1.4                   | 5.3 x 4.1 x 2.1 / 17.4 x 13.5 x 6.9           | □46 / 1624                   |
| 6a   | Exhaust diffuser                              | 15                    | 7.0 x 4.3 x 3.8 / 23 x 14.1 x 12.5            | □115 / 4061                  |
| 6b   | Flexible joint                                | 1.0                   | 3.9 x 3.9 x 0.7 / 12.8 x 12.8 x 2.3           | □11 / 388                    |
| 6c   | Exhaust stack                                 | 25.0                  | 15.6 x 4.9 x 5.3 / 51.8 x 16.1 x 17.4         | □404 / 14267                 |
| 6d   | Exhaust splitter, lower                       | 1.8                   | 3.8 x 3.8 x 2.0 / 12.5 x 12.5 x 6.6           | □27 / 954                    |
| 6e   | Exhaust splitter, middle + upper              | 1.6                   | 3.8 x 3.8 x 1.7 / 12.5 x 12.5 x 6.6           | □23 / 812                    |
| 6f   | Exhaust transition                            | 1.4                   | 3.8 x 3.8 x 1.4 / 12.5 x 12.5 x 4.6           | □19 / 671                    |
| 7    | Lube oil cooler                               | 3.6                   | 4.5 x 1.0 x 2.8 / 14.8 x 3.3 x 9.2            | ~13 / 459                    |
| 14   | Gas turbine ventilation and generator cooling | 23.1                  |   | □245 / 8652                  |
| 45   | External gas fuel unit                        | 0.55                  | 2.8 x 2.0 x 0.85 / 9.2 x 6.6 x 2.8            | □5 / 177                     |
| 16   | Fire extinguishing system (CO2)               | 6.0                   | 3.4 x 2.7 x 2.9 / 11.2 x 8.9 x 9.5            | □27 / 953                    |
| 17   | General cargo                                 | 20.0                  |   | □150 / 5297                  |
|      | Control equipment                             | 15                    |   | □37 / 1300                   |
|      |   | Σ□370                 |   | Σ□2118 / 74787               |

This shipping specification is for guidance only. Weight, dimensions, and volumes may vary from project to project.



## 7. Installation and Commissioning Schedule



Above time schedule is a preliminary schedule only. The time schedule may be subject to changes depending on local environmental conditions, actual scope of supply or place of installation.



## 8. Maintenance General Information

Siemens' maintenance concept is focused on optimizing preventive maintenance with regards to cost and installation availability throughout the entire installation lifetime. This preventive maintenance philosophy has shown to return the lowest cost of ownership and maximum availability and reliability of the installation. Time has shown that employing an OEM recommended preventive maintenance plan will benefit owners directly in the reduction of unplanned downtime and unplanned maintenance cost. Whilst rare, it is important for operators to have in place support for corrective maintenance for those infrequent occasions that call for resolution of a forced outage and here Siemens supports with a range of spare engines, emergency spare parts and fast response field service personnel.

### 8.1 Service agreement

Correctly adopted and planned inspection and maintenance is the foundation for trouble-free and profitable Gas Turbine operation. Siemens' Long Term Service Agreement is named FlexLTP – designed for maximum flexibility to fit the operator's overall needs and priorities.

The scope of the services is adapted to your needs, ranging from a supportive contract up to:

Essential: A set of agreed terms to simplify interaction. Basic services to support an emergency such as 24/7 support, remote diagnostics, etc.

Advanced: All required scheduled maintenance activities including project management are included at a fixed price for the duration of the contract.

Premium: Includes coverage for both scheduled as well as unscheduled events together with a

The range can be summarized into the following: tailored maintenance solution based on operators' needs and priorities, operating profile and site conditions. Through sensor data the scope of services can be continuously adapted during the Term for maximized use of the equipment and predictability of the Gas turbine maintenance budget.

The Flex-LTP can be further adapted with features such as: performance guarantees, spare part kits, remote diagnostics, emergency back-up and lease engines and flexible (pay-per use, etc.) commercial and payment terms.



## 9. Quotation

### We quote as follows:

1 Unit Gas turbine STG-600 24,5 MW unused for indoor/outdoor installation,  
incl. spare parts at least for 3 years power generating 15,400,000 **EUR**

Total of 4 (four) units *package price* **61,000,000 EUR**

**Delivery:** **instant delivery**, after full payment received,  
10-15 days FCA Europe place  
according *Incoterms\*2020*.

**Inspection:** Inspection fee for SIEMENS warehouse is  
**150,000 EUR**

**Payment:** **40%** upon order after inspection  
**60%** before loading  
All payments must be done on our given  
account, issued in our commercial INVOICE.

**Warranty:** **12 months**, after commissioning under  
Siemens supervision.

### Please note:

This quotation does not include foundations concrete work according the given foundation layout,  
land transportation to site of erection as well as craning on site place of erection.

We guarantee that the turbine is well maintained and in well serviced condition, ready to transport.

For all works as under “**2. Exclusions**” we quote optionally as above shown.

For transportation we can quote optionally as above shown.

A huge spare part package for almost all wearing parts come with the offer, more as usually will  
be delivered by Siemens.

All instalments and payments must be made against invoice before  
transportation can be started from warehouse.