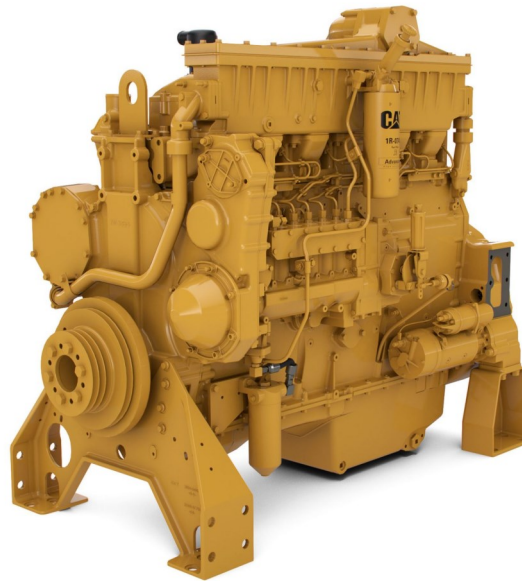


# Caterpillar 3406C



# Operational History of the Engines

- ☞ The **Caterpillar 3406C engines** were removed from railway trains.
- ☞ These engines were used exclusively to power **onboard generators**, supplying **air conditioning and lighting systems**.
- ☞ During operation, they ran at an **average load of 70%**, ensuring good mechanical preservation.



## Work Maintenance on the Engines

- ✎ Full engine treatment including Cat oil and filter replacement.
- ✎ Remove and replace Fuel Injectors plus fuel line's O-rings.
- ✎ Maintenance to main Fuel Pump including advancer.
- ✎ Remove and replace front and rear Oil Seals.
- ✎ Remove and overall, to Fuel Regulator plus adjust idle RPM to 1800.
- ✎ Test load including check form.
- ✎ Performing thorough engine wash and paint repairs.
- ✎ General inspection



# Engine Dynamometer Test

- ✓ Industrial removed engine in working condition ✓ DYNO tested

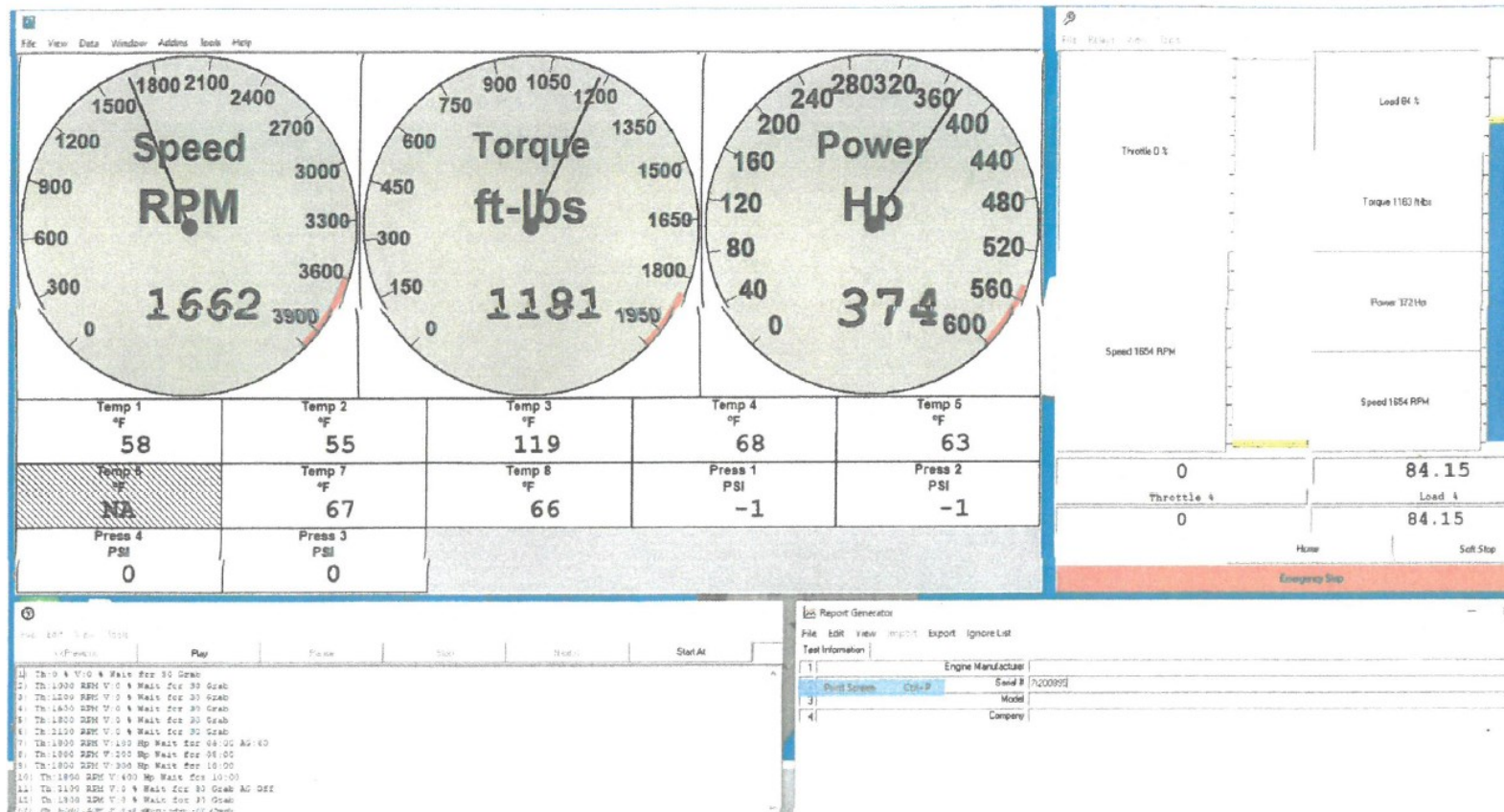
**PowerNet**

PowerNet *WS*  
www.pwrtst.com



Power Test, Inc.

Sussex, WI - US





## Engine Specifications

✓ Industrial removed engine in working condition ✓ DYN0 tested



### CAT<sup>®</sup> ENGINE SPECIFICATIONS

269 bkW/360 bhp @ 1800 rpm

I-6, 4-Stroke-Cycle Diesel



**Bore**.....137.2mm (5.4 in)

**Stroke**.....165.1mm (6.5 in)

**Displacements**.....14.64L (893.39 in<sup>3</sup>)

**Aspiration**.....Turbocharged / aftercooled

**Compression Ratio** .....15.9:1

**Rotation (from flywheel end)**.....Counterclockwise Capacity for Liquids

**Cooling System**.....20L (5.5 gal)

**Lube Oil System (refill)**.....38.0L (10.0 gal)

**Engine Weight, Net Dry (approximate)**.....1,512kg (3.333lb) aftercooled

# Engine Reusability and Versatile Applications

Thanks to their robust construction and history of moderate load operation, these engines remain highly reliable and are suitable for reuse in multiple applications, such as:

- ⌘ Generators
- ⌘ Drilling machines
- ⌘ Crushers and screens
- ⌘ Industrial sieves
- ⌘ Pumps
- ⌘ Hydraulic power units
- ⌘ Marine auxiliaries
- ⌘ Construction and mining equipment



# Engine Reusability and Versatile Applications

Thanks to their robust construction and history of moderate load operation, these engines remain highly reliable and are suitable for reuse in multiple applications, such as:

- ⌘ Generators
- ⌘ Drilling machines
- ⌘ Crushers and screens
- ⌘ Industrial sieves
- ⌘ Pumps
- ⌘ Hydraulic power units
- ⌘ Marine auxiliaries
- ⌘ Construction and mining equipment





# Engine Reusability and Versatile Applications

Thanks to their robust construction and history of moderate load operation, these engines remain highly reliable and are suitable for reuse in multiple applications, such as:

- ✎ Generators
- ✎ Drilling machines
- ✎ Crushers and screens
- ✎ Industrial sieves
- ✎ Pumps
- ✎ Hydraulic power units
- ✎ Marine auxiliaries
- ✎ Construction and mining equipment





# Thank you!