

# 机组描述 – 9E CCPP – 376.8 MW Capacity

## Key Details:

- **Fuel:** Dual-fuel capability (Natural Gas & Distillate Oil)
- **Operational Since:** 1997
- **Availability:** Over 95% with no significant/chronic malfunctions
- **Upgraded Equipment:** Gas turbines have been modernized and are running the latest version from the manufacturer
- **Maintenance Status:** Regular maintenance completed; detailed reports available
- **Operating Hours:**
  - Gas Turbine 1: 179,123 hours
  - Gas Turbine 2: 171,764 hours
  - Steam Turbine: 176,258 hours

## Supply Scope:

- **Gas Turbines:** 2 x General Electric PG 9171 E (dual-fuel, high efficiency)
- **Steam Turbine:** 1 x GE Model 270 T338 (130 MW capacity)
- **Generator:** 3 x Elin A09157TS Generator
- **Heat Recovery Steam Generators:** Vertical-type, high efficiency (~82%)
- **Cooling System:** Seawater-cooled condenser with titanium tubing
- **Transformers:** ABB step-up and auxiliary transformers
- **Emergency Backup:** Aksa diesel generator, Atlas Copco air compressors
- **Main Spare parts:** 2 x Used Capital Parts and 1 x new Generator coils



目前设备状态:

TCC控制中心

带电保护

主设备:

充氮, 定期保

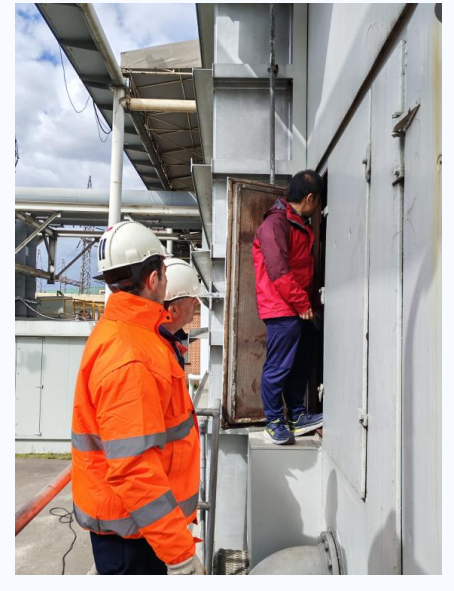
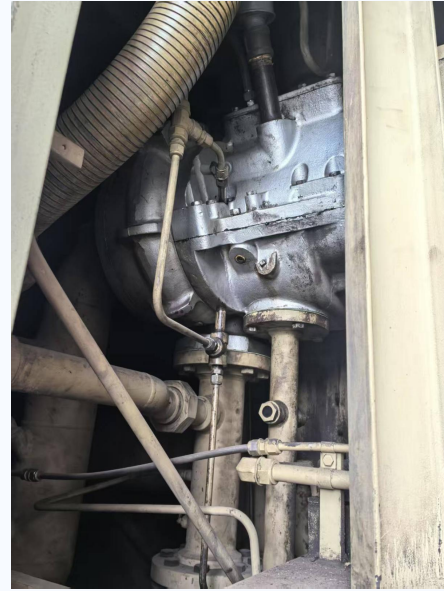
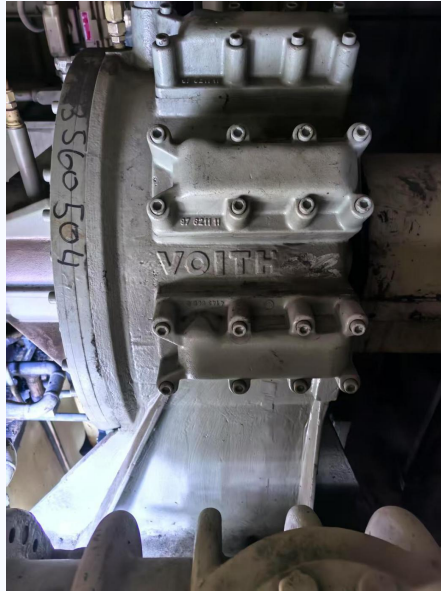
养, 每月盘车

一次

## 2\_燃机本体及辅机间状态

ACC compartment include

- ✓ - ACC Gearbox
- ✓ - Start Motor
- ✓ - Torque convert
- ✓ - Atomizing pump
- ✓ - Lube oil & Hydraulic oil system
- ✓ - Lube oil cooler



# 3\_透平外缸\_Turbine Casing



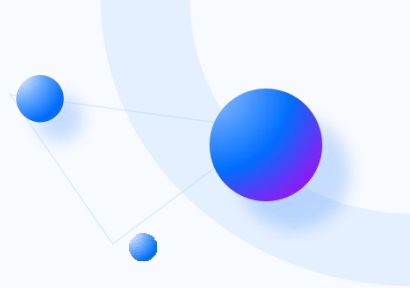
Combustion system (dual fuel)

Compressor casing

Turbine Casing



# 4\_透平机舱\_Turbine Compartment



IGV



Turbine component (S3B)



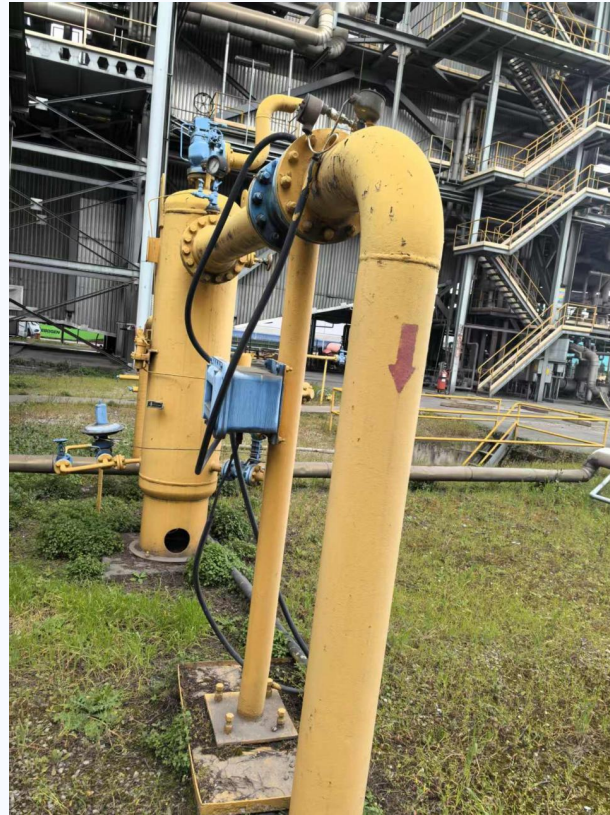
# 5\_燃料模块\_Fuel Modules



Fuel Gas Compartment



Gas Fuel Foward skid



Liquid Fuel skid

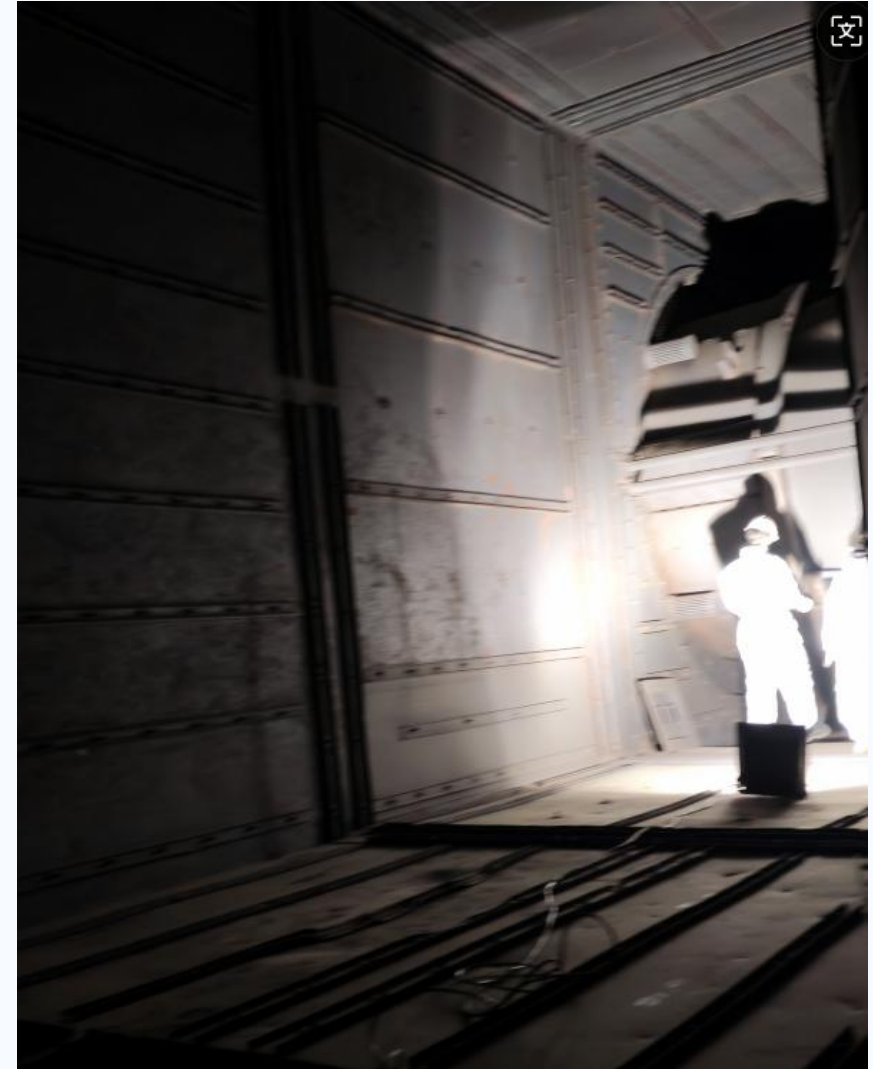


# 6\_进排气系统\_Inlet/Outlet System

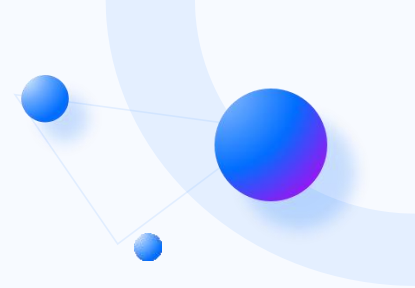
Inlet system



Outlet system



# 7\_其他系统\_Other System



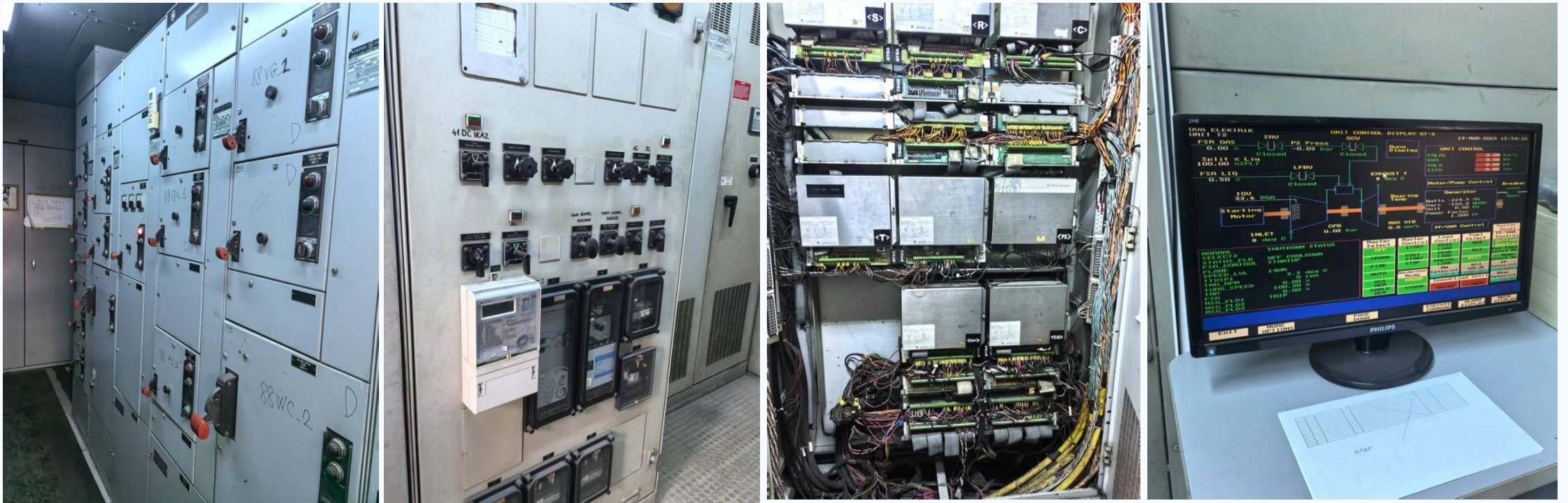
CO2 system

Fan

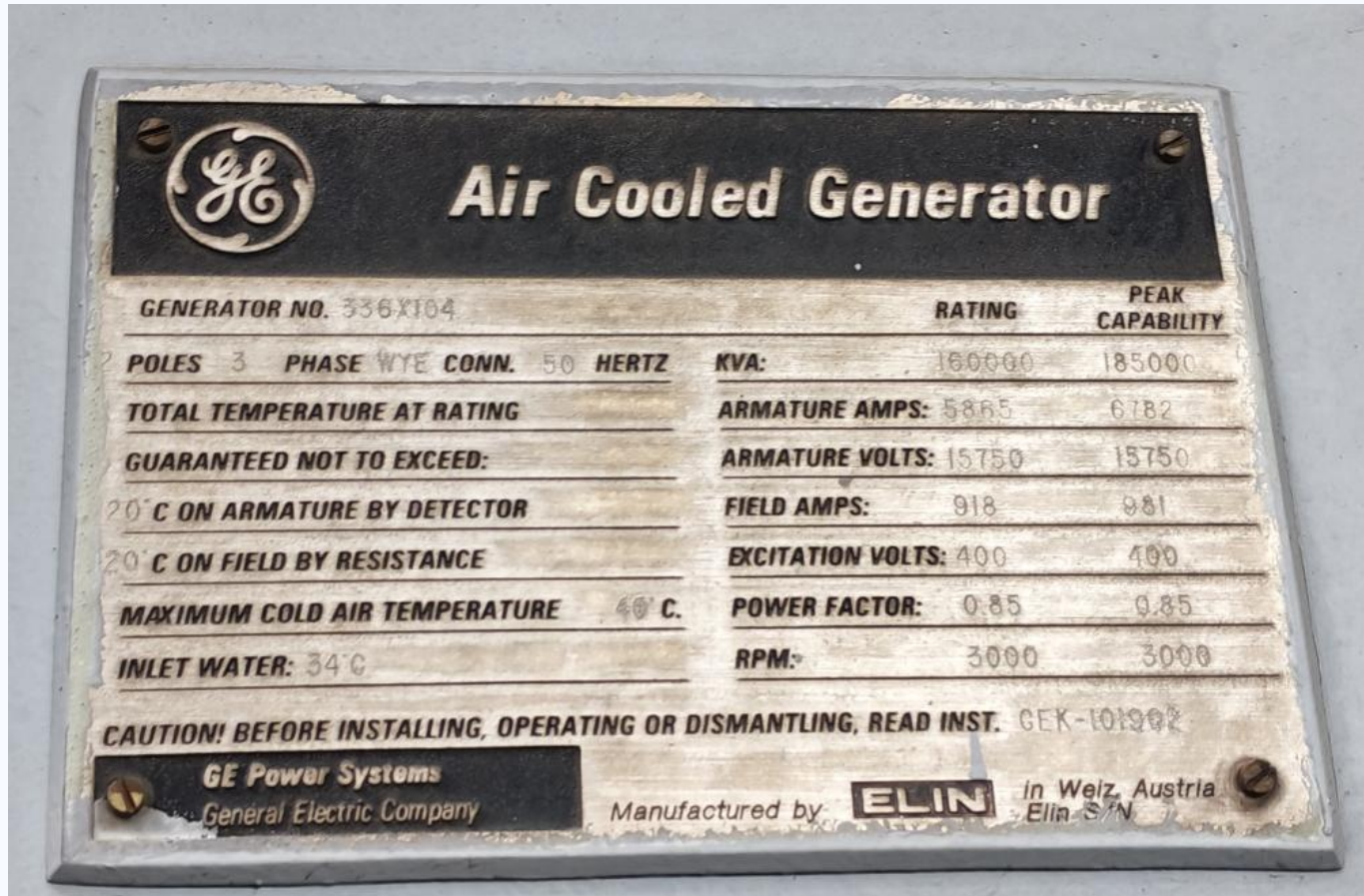
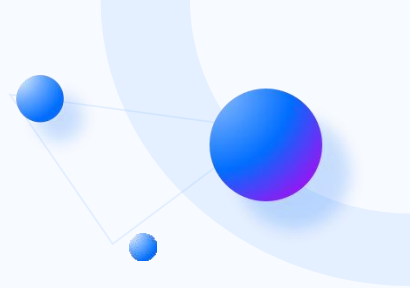


# 8\_控制系统\_Control System

MK V system



# 9\_发电机\_Generator



# 10\_备件情况\_Spare Parts

