

Solar TITAN 130 Specifications and Status Description

Solar TITAN 130 gas turbine generator sets (NG)

- . **Rated power output:** 15,000 kWe
- . **Electrical efficiency:** 31%
- . **Complete simple cycle package** (all auxiliary systems included)
- . **Compressor:** 14-stage (with 6 adjustable stages)
- . Turbine Configuration: 3-stage
- . Engine Version: 20501SA AXI
- . Rotor Speed: 11,197 rpm (50 Hz)

At rated operating conditions per unit:

- . Heat Rate: 8,600 Nm³/h
- . **Exhaust gas flow rate:** 202,510 kg/h
- . **Exhaust gas temperature:** 490°C

Operational History

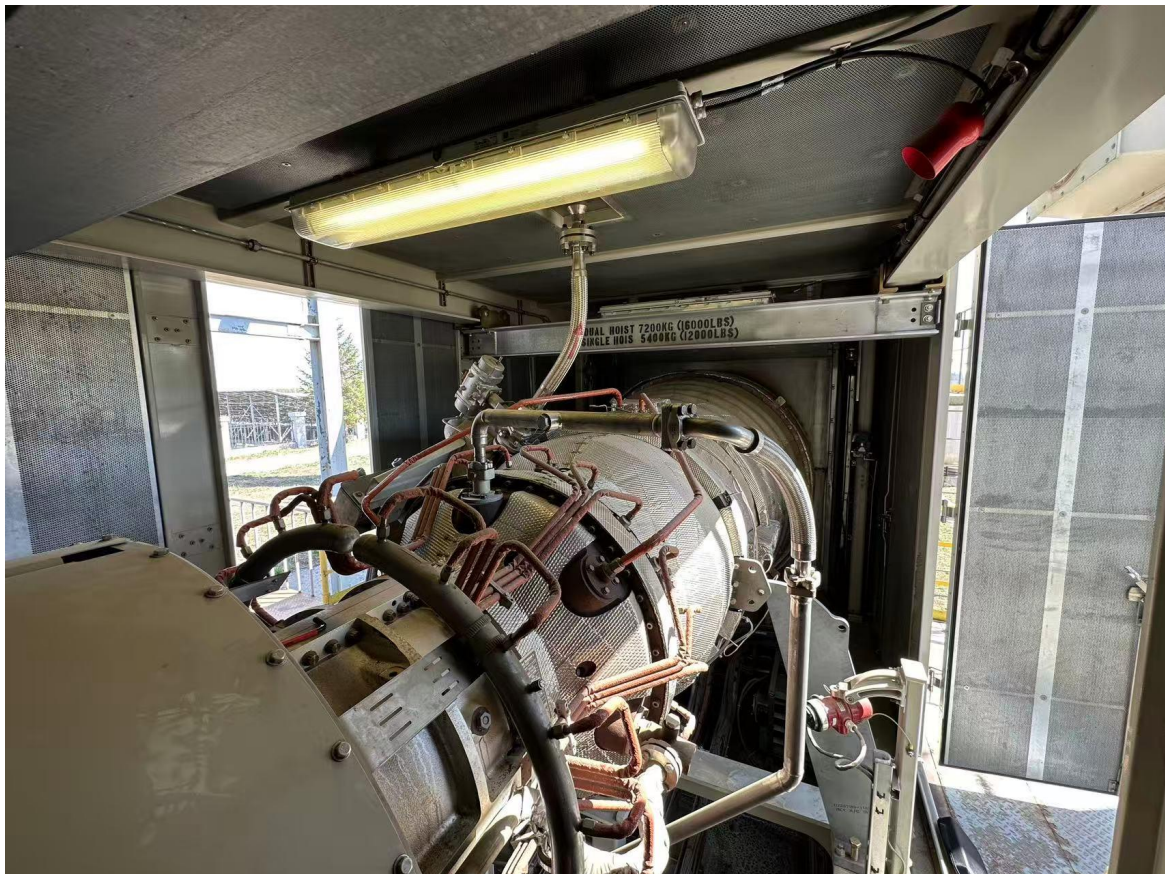
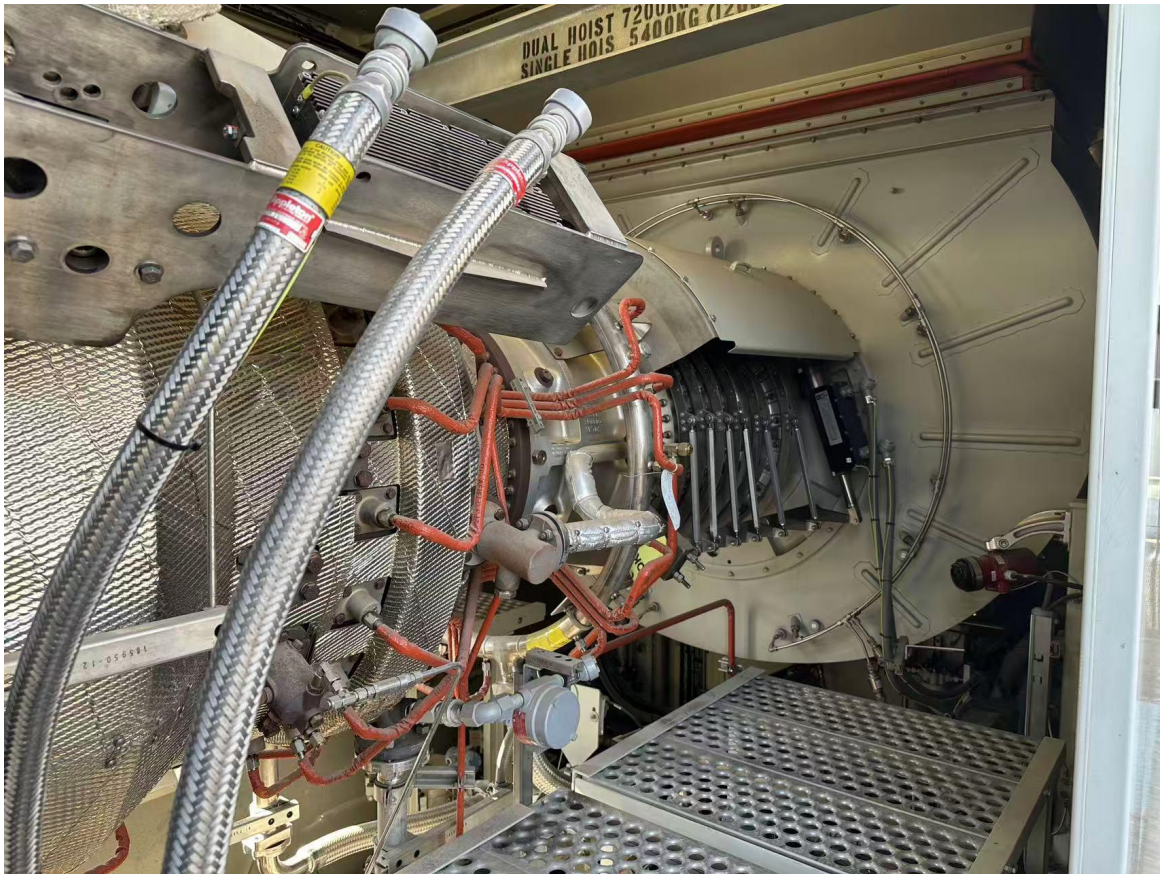
- . **Commissioning Year:** 2010
- . **Shutdown Date:** 2012
- . **Total Operating Hours:** 6794 hours
- . **Start-up Count:** 136 times
- . **Maintenance Protocol:** Regular maintenance performed per Solar's Operation Manual during operation period, with equipment functioning properly.

Current Status

- . The TITAN130 unit is currently maintained by the original operating team.
- . Unit condition remains excellent.
- . All auxiliary power generation equipment is complete and fully operational.

Overall photos of the gas turbine

Gas Turbine Housing Condition



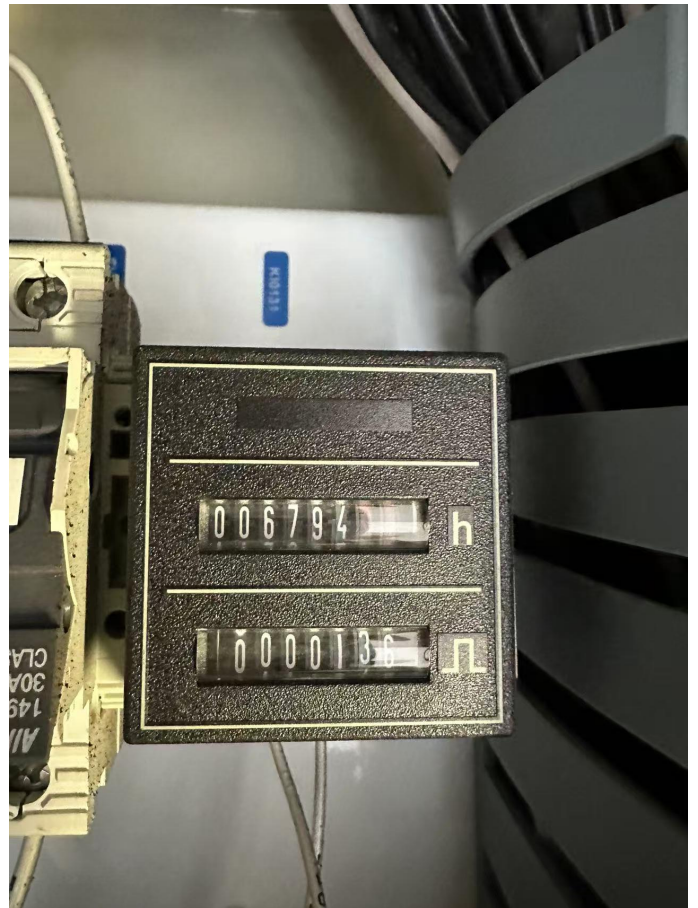




ABB Generator



